

MEZZO: Replacing the canopy covering



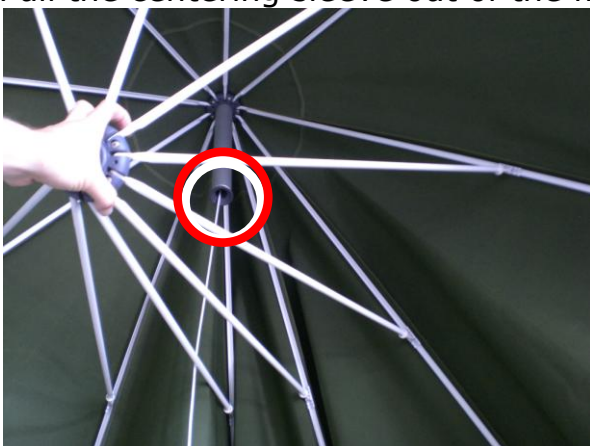
1. Remove the cap on the bottom end of the distributor flange with the help of a knife.



2. Pull the tow rope downwards together with the rope clamp and pin. Then untie the knot.



3. Pull the centering sleeve out of the flange tube.



4. Unscrew the two socket screws at the end of the mounting support. To do so you will need two 3mm hex keys. You may find it somewhat difficult to remove the screws, as an adhesive was used to secure them.



5. You will now have disconnected the canopy from the metal frame.



6. Slip the spoke ends out of the fabric sleeves and then pull the canopy covering off the frame.

7. Now pull the new covering over the frame. Be sure to put the rubber caps back on the end of the spokes before slipping the spokes into the fabric sleeves. Otherwise the sleeves will soon have holes. Should this happen, we cannot accept guarantee claims or complaints.



8. Once the canopy covering has been replaced, the rope must be inserted as follows: You will need about 45 cm of strong wire. Bend in the ends of the wire to avoid injury and to form a loop. Fasten the end of the rope to the wire loop as shown in the following illustrations.



9. Insert the wire into the front of the pulley and then pull it all the way down.

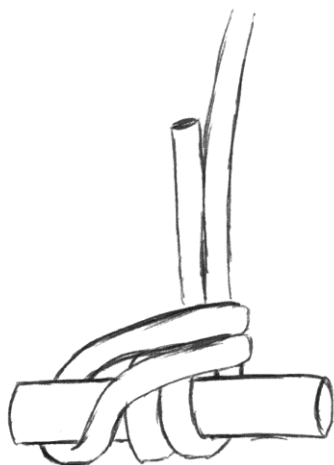
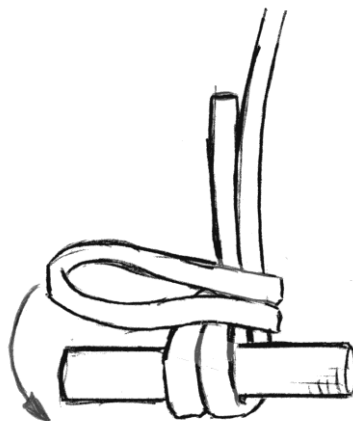
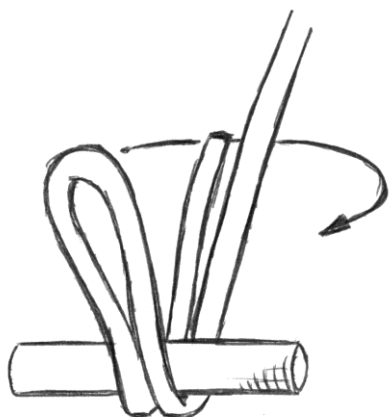


10. Place the core bit adapter into the mounting support and screw the mounting support and the frame head together again. (Cf. 4) It is advisable to secure the connection with a drop of adhesive. You may need a rubber hammer to drive the screws into the bore hole.



11. Press the centering sleeve back onto the flange tube. (Cf. 3)

12. Fix the rope pull onto the rope clamp and pin as shown in the illustrations.



12. Press the end cap back onto the end of the distributor flange.