

RIALTO

RIALTO stands for atmosphere and architectural style – both indoors and outside. This impressive sunshade concept can be put to a variety of uses to suit private, public or business requirements. Furthermore, it can create a welcoming ambience in large-area squares, exhibitions, stylish venues and foyers.



Our upmarket side-post sunshade up to Ø 4 m

- exklusiv and graceful
- Designer shade grouping
- optional pivot system

MAY – shade systems
made in Germany

RIALTO – Product information



RIALTO RG – standard model
RIALTO RP – canopy with pivot system

Operation
with removable stainless steel crank.

High-quality framework materials
The poles of our sunshades are all made of high-quality alloyed, extruded aluminium profiles. Frame surfaces are powder-coated, highly impact –proof, and available in white RAL 9010. Special colours available on request.

- spoke dimensions
30 x 15 x 2 mm/ 25 x 15 x 2 mm
- support strut dimensions
25 x 15 x 2 mm

Frame joints

For us perfection in workmanship is an absolute must. Therefore, all moving axes are fitted with bolts. This extravagant technology ensures maximum stability and durability as well as easy execution of repairs.

Canopy covering fabric

Due to a special self-tensioning telescopic spring system, the awning remains perfectly taut, even after years of usage. The canopy covering can easily be exchanged by means of a practical hooking system. For fabrics and awning colours see Page 84 onward.

360° Rotation

All our anchoring systems are equipped with a special clamp that allows the sunshade to be rotated completely to follow the path of the sun.

Shade grouping

Specially designed for large-area outdoor catering. The sturdy Rialto mast can hold up to 4 elegantly grouped shades. A real eye-catcher for the patio with a difference!

Installation options

- mobile
 - stationary
- cf. Page 36 onward.

When not in use

The protective cover provided can easily be slipped over the shade during bad weather periods.



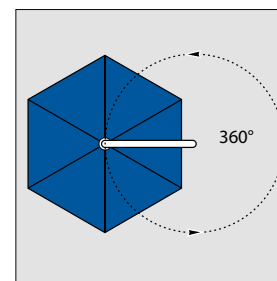
Operation



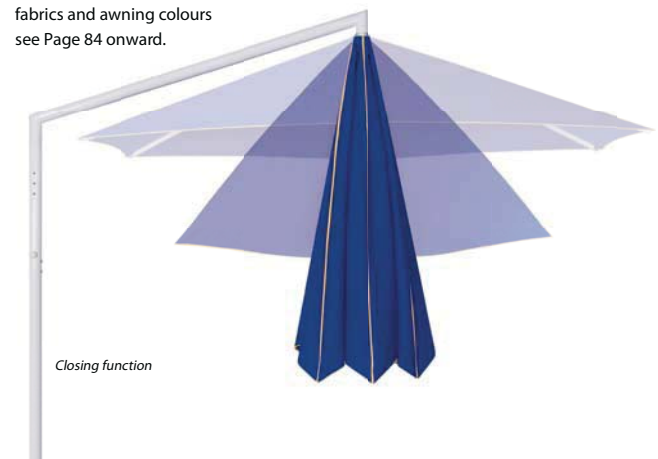
Canopy covering



Frame (single shade /triple shade)



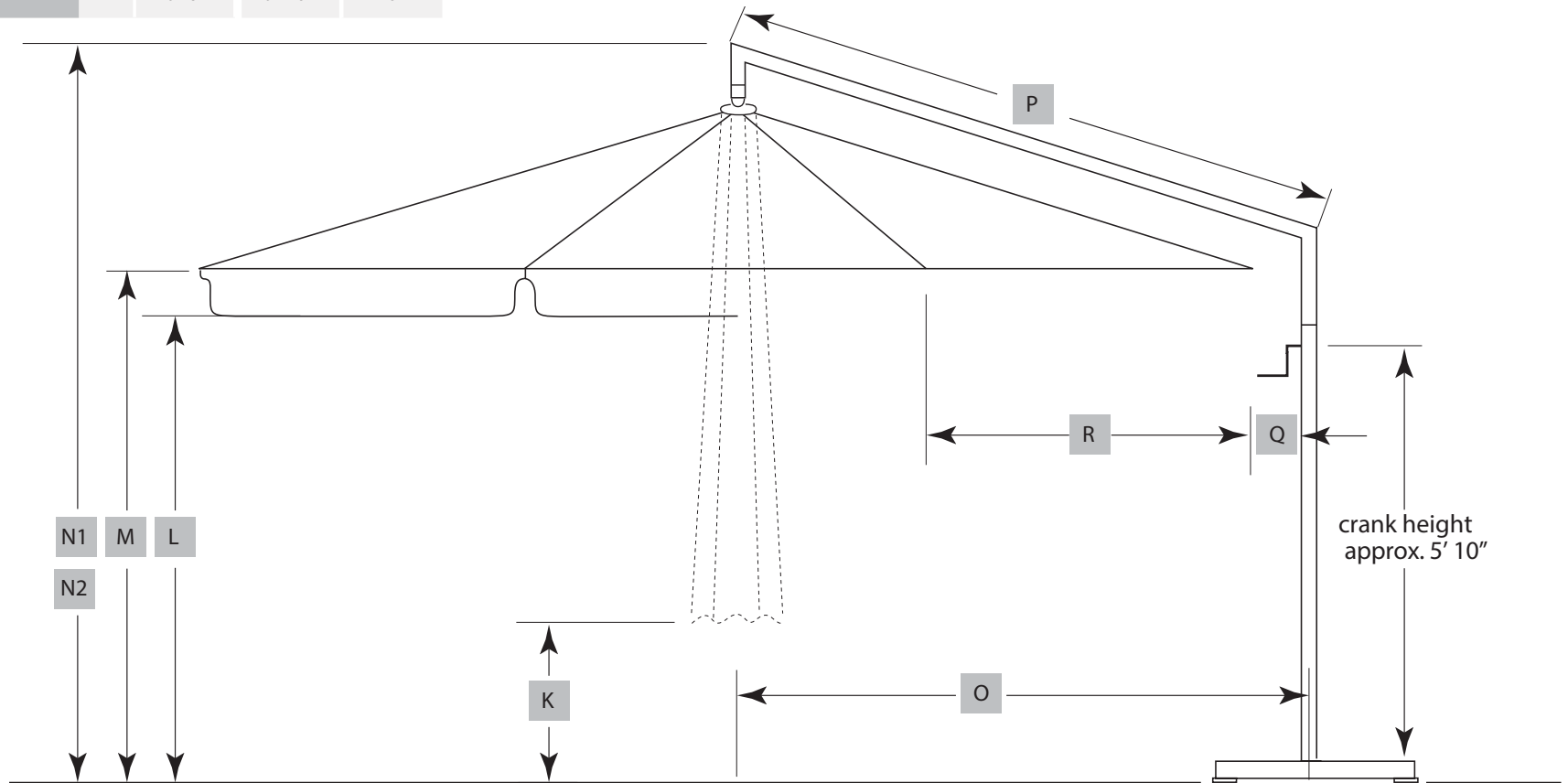
360° rotation



Closing function

RIALTO - Sizes and Technical Data

e	ft	Ø 3.0 m	Ø 3.5 m	Ø 4.0 m
K	ft	3' 3"	2' 6"	1' 10"
L	ft	6' 5"	6' 5"	6' 5"
M	ft	6' 7"	6' 7"	6' 7"
N1 without valance	ft	8' 10"	9' 2"	9' 4"
N2 with valance	ft	9' 6"	9' 10"	10'



Intermediate or special sizes available on request.

RIALTO - Sizes and Technical Data



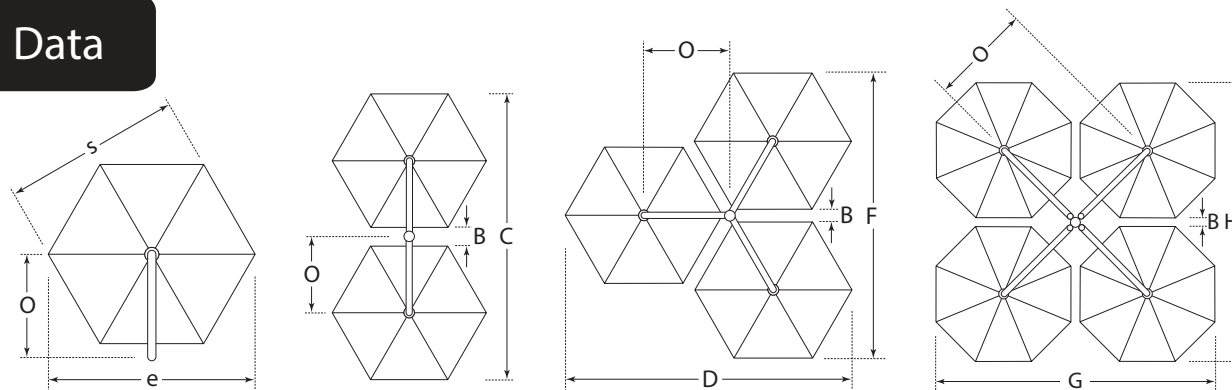
Crank to fix the tilted canopy



Pivot system



Flexible tilt function (max. 30°)



		Single with 6 segments			Double with 6 segments			Triple with 6 segments			Quad with 8 segments		
e	m	Ø 3.0m	Ø 3.5m	Ø 4.0m	Ø 3.0m	Ø 3.5m	Ø 4.0m	Ø 3.0m	Ø 3.5m	Ø 4.0m	Ø 3.0m	Ø 3.5m	Ø 4.0m
e	ft	9' 10"	11' 6"	13' 1"	9' 10"	1' 6"	13' 1"	9' 10"	1' 6"	13' 1"	9' 10"	1' 6"	13' 1"
s	ft	8' 6"	9' 10"	11' 4"	8' 6"	9' 10"	11' 4"	8' 6"	9' 10"	11' 4"	9'	10' 8"	11' 10"
B	ft	-	-	-	2' 11"	1' 9"	1' 6"	1' 8"	1' 4"	1' 4"	1' 4"	10"	8"
C	ft	-	-	-	20'	21' 8"	24' 3"	-	-	-	-	-	-
D=F	ft	-	-	-	-	-	-	18' 8"	21' 4"	24' 3"	-	-	-
G=H	ft	-	-	-	-	-	-	-	-	-	19' 8"	22' 2"	24' 11"
O	ft	5' 7"	6' 3"	7' 3"	5' 9"	6' 3"	7' 3"	5' 9"	6' 3"	7' 3"	7' 3"	7' 10"	8' 10"
p	ft	6' 1"	6' 9"	7' 9"	6' 1"	6' 9"	7' 9"	6' 1"	6' 9"	7' 9"	7' 9"	8' 6"	9' 6"
Q	ft	8'	6"	8"	6"	6"	8"	6"	6"	8"	2' 4"	2' 2"	2' 4"
R	ft	5' 1"	5' 11"	6' 9"	5' 1"	5' 11"	6' 9"	5' 1"	5' 11"	6' 9"	3' 11"	4' 5"	5' 1"
Weight/lbs*		60	64	68	108	119	128	132	146	159	190	207	225

Support pole diameter: Outer Ø 76 mm - aprox. 3" (pole thickness 3 mm - aprox. 1/8")

Spoke dimensions: 1 - 3/16" x 9/16" x 1/16"

Support strut dimensions: 1" x 9/16" x 1/16"

*Without packaging

All dimensions are metric conversions and have been rounded to nearest 1/2".

If exact dimensions are required, see the May catalogue for exact metric dimensions.

RIALTO - Mobile Installation Options

Full Frame Pedestal with 8 diagonal support leveling screws

2 sets of concrete slabs required, galvanized, 3' 4 - 1/2" x 3' 4 - 1/2", weight 62 lbs, total height min. 1' 5/8", max. 1' 2 - 1/4".

Order No. RZ112



RZ112

Full Frame Pedestal on wheels

2 sets of concrete slabs required, galvanized, 3' 4 - 1/2" x 3' 4 - 1/2", weight 62 lbs, total height 1' 2 - 1/4", diameter of rollers 2".

Attention: wind sensitive!

Order No. RZ114



RZ114

Concrete Slabs Required

1 set = 4 slabs, each approx. 19 - 5/8" x 19 - 5/8" x 2"
Exact size 50 cm x 50 cm x 5 cm.
Weight per slab: approx. 62 lbs.

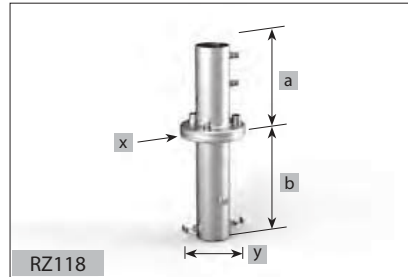
Slabs are not included with pedestals.



RIALTO - Stationary Installation Options

Anchor tube to be embedded in concrete
 2 pieces, screw-off upper part, for single and double-shade RIALTO, galvanized, weight 20 lbs,
 $a = 8 - 5/8"$, $b = 11 - 3/8"$, $x = \text{Ø} 6 - 3/4"$, $y = 6 - 1/4"$

Order no. RZ118



Wall bracket

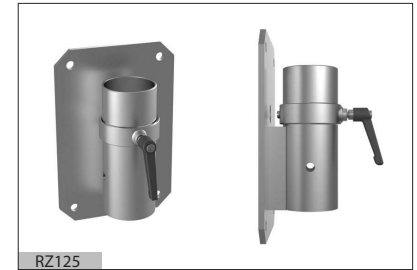
galvanized, weight approx. 12 lbs.,
 height/width/depth: $11 - 3/4"$ / $6 - 1/4"$ / $9 - 1/16"$
 plate thickness: $1/4"$.

When ordering, please state installation height,
 i.e. distance from ground surface to bottom end of
 support mast. Otherwise it may become necessary
 to shorten the mast.

Please note when mounting:

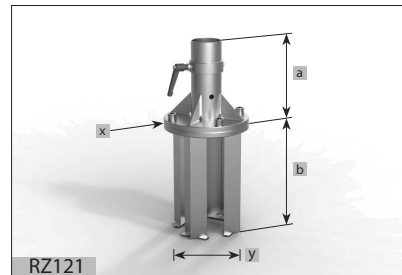
- Only use heavy-duty dowels
- Only suitable for concrete walls or
- Use through bolts.

Order No. RZ125



Anchor foot to be embedded in concrete
 2 pieces, screw-off upper part, for triple-shade and
 quad-shade RIALTO, galvanized, weight approx. 38 lbs.,
 $a = 9"$, $b = 12 - 1/2"$, $x = \text{Ø} 9 - 1/2"$, $y = 8 - 1/4"$.

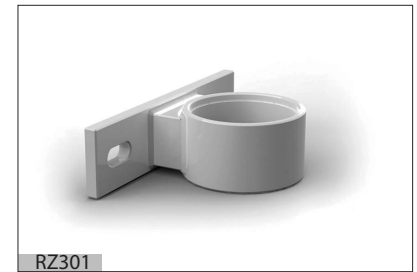
Order No. RZ121



Wall mount for strain relief

to complement wall bracket RZ125, to be mounted
 with heavy-duty dowels at chest height.

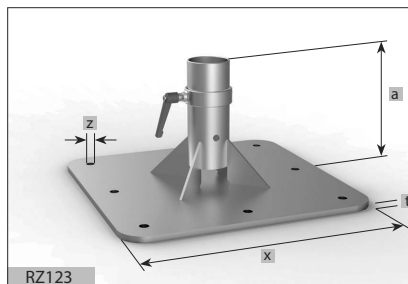
Order No. RZ301



Dowel-anchored plate

galvanized, $19 - 3/4" \times 19 - 3/4" \times 1/2"$, weight 51 lbs
 $a = 9 - 7/8"$, $x = 19 - 3/4" \times 19 - 3/4"$, $t = 1/2"$, $z = \text{Ø} 3/4"$.

Order no. RZ123



Theft pin

theft pin & padlock to make all installation options
 lockable, stainless steel, for support pole $\text{Ø} 76 \text{ mm}$,
 suitable for retrofitting.

Order No. 200103



MayTex-Acryl with Texgard impregnation

- 100% branded acrylic fibre, spun-dyed, weight approx. 300 g/m²
- high water tightness and water pressure resistance - 37 hPa (water column 370 mm)
- weather-proof, high and low temperature resistant
- rot-resistant
- effective protection against oil, grease, mildew and algae, industrial pollution, exhaust fumes and other negative environmental factors
- extremely high light and colour fastness
- tested acc. to Öko-Tex standard 100 as well as UV standard 801
- suitable for screen-printing



SA 314 010 white



SA 314 018 white/grey knopped



SA 314 008 ochre



SA 314 033 ivory



SA 314 580 white/yellow, grey knopped



SA 314 014 mandarin



SA 314 325 ecru



SA 314 583 white/yellow, grey knopped



SA 314 019 terracotta



SA 314 044 grey/white



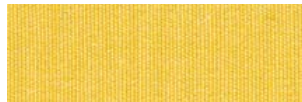
SA 314 045 pyrite



SA 314 002 orange



SA 314 364 telegrey/white



DA 7560 light yellow



SA 314 001 cherry



SA 314 471 silver-grey/dark brown knopped



SA 314 003 yellow



SA 314 347 ruby



SA 314 344 multi-color



SA 314 038 beige



SA 314 022 rust

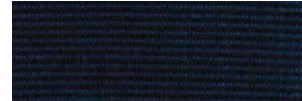
Cloth Collection



SA 314 763 bordeaux



SA 314 011 royal blue



SA 314 271 navy blue/black



SA 314 362 dark green



SA 314 006 sapphire



SA 314 154 black



SA 314 257 green/black



SA 314 414 navy blue

Colour Fashion Collection 26

MayTex-Acryl with Texgard impregnation



SA 314 016 dark brown



DA 8779 olive brown



DA 8203 blue basalt



DA 7559 taupe



SA 314 546 blue patina



SA 314 624 green patina

The shades shown here are not in accordance with the original ones. If requested, we will be pleased to send you a collection of original cloth samples.

Borderings

MayTex-Poly

- 100% Polyester (PES) one side acrylic-coated
- dirt and water repellent thanks to Teflon finish
- high water penetration and pressure resistance
- 70 hPa [water column 700 mm]
- good light and weather fastness (UV resistance)
- high tear and tensile strength
- light weight of approx. 200 g/m²
- UV801-tested



9577 white



9526 bright yellow



9793 blue



9823 ivory



9527 orange



9545 navy blue



9875 cream



9671 red



9710 dark green



9816 sand



9878 terracotta



9653 grey



9879 bordeaux



9853 black



9675 cherry

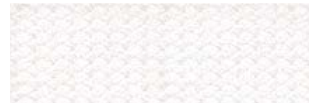
PVC

- 100% high-tenacity Polyester fabric (PES)
- both-sided PVC surface coating with fungicidal treatment against mould infestation
- 100% waterproof
- high UV resistance and weatherability due to special surface sealing (top finish)
- resistant against high and low temperatures
- long-lasting attractive appearance
- scratch-resistant, easy-care, distortion-free
- easy to clean, even when mounted
- protection against UV rays
- high light and colour fastness
- ca. 380 g/m²

We also supply parasols with flame-retardant fabrics for indoor areas (DIN 4102 B1) on request.

Borderings

If no colour is specified, a binding tape will be chosen to match the cloth.



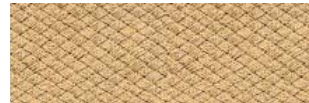
00 white



20 ivory



10 pyrite



11 beige



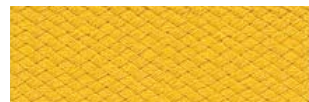
52 nature



47 opal



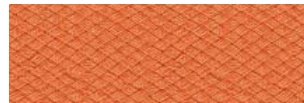
18 silver



32 yellow



15 ochre



148 terracotta



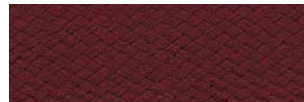
81 orange



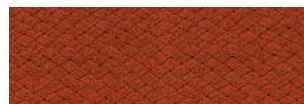
82 red



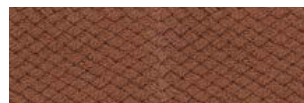
85 cherry



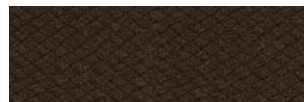
86 bordeaux



83 rust



25 light brown



27 dark brown



19 black



79 mandarin



63 blue



62 royal blue



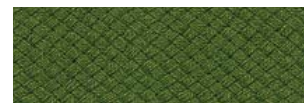
66 sapphire



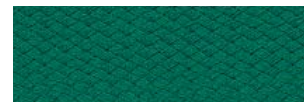
91 navy blue



42 lime



45 olive



44 grass-green



95 dark green

Atmosphere and Personal Well-Being

The textile finishing of a parasol canopy – i.e. the awning fabric – is not only the most important and most conspicuous feature of any sun protection system, it also fulfils numerous functions:



Harmony

through well-balanced colours.



Joie de vivre

through vibrant colours.



Inner peace

through natural shades of colour.






Colour, light and shade-personal well-being, atmosphere and decoration

The most comprehensive range of upmarket classics and specialities. The awning fabric keeps out the light. It protects, shades, creates atmosphere and serves as an element of design and decoration. The fabric evokes a sense of harmony and creates a feeling of well-being by filtering and tinting the light and thus lending a room and its environment a very special soothing atmosphere. The impact a fabric has on a person is decisively determined by its colour, pattern and degree of translucence.




Healthy shade provider, protection from harmful UV radiation

The sun is a source of life and its light provides our bodies with essential vitamins, but it can also be very dangerous. Studies by the WHO indicate a threefold increase in skin diseases caused by harmful UV radiation. The UV Protection Factor (Sun Protection Factor) of our awning fabrics is a unit that indicates to what extent

they increase the human skin's natural protection time to direct sunlight. The length of the natural protection of human skin depends on the skin type. All the designs in our collection have been tested and certified according to the latest and most stringent standard UV 801.

	Sun Protection Factor			Effect on personal well-being	
					
				Joie de vivre	Inner peace
MayTex-Acryl UNI					
SA 314 001, SA 314 002, SA 314 003, SA 314 011, SA 314 014			80	•	
SA 314 006, SA 314 008, SA 314 016, SA 314 019, SA 314 022, SA 314 038, SA 314 044, SA 314 045, SA 314 154, SA 314 257, SA 314 271, SA 314 344, SA 314 347, SA 314 362, SA 314 364, SA 314 414, SA 314 546, SA 314 624, SA 314 763			80		•
SA 314 325, SA 314 471, SA 314 583		60			•
SA 314 010, SA 314 580, SA 314 018, SA 314 033	40				•
DA 7560		60		•	•
DA 7559, DA 8203		60			•
DA 8779	40				•
VALMEX MayTex-Poly			80		

How high is your personal protection factor? Type 1-6

Type	Characteristics	Reaction of the unprotected skin to 30 mins. radiation in June	The human skin's natural protection time	Protection time of the skin when shaded by a parasol		
						
1	light skin, freckles, fair or red hair, blue or green eyes	always sunburn no tan	5-10 minutes	200-400 minutes	300-600 minutes	400-800 minutes
2	light skin, fair hair, blue or green eyes	always sunburn a slight tan	10-20 minutes	400-800 minutes	600-1200 minutes	800-1600 minutes
3	dark hair, blue eyes	slight sunburn a good tan	20-30 minutes	800-1200 minutes	1200-1800 minutes	1600-2400 minutes
4	dark skin, dark or black hair, brown eyes	no sunburn a good tan	ca. 45 minutes	ca. 1800 minutes	ca. 2700 minutes	ca. 3600 minutes
5	dark skin, black hair, dark eyes	no sunburn	ca. 60 minutes	ca. 2400 minutes	ca. 3600 minutes	ca. 4800 minutes
6	black skin, black hair, black eyes	no sunburn	ca. 90 minutes	ca. 3600 minutes	ca. 5400 minutes	ca. 7200 minutes

Product properties of awning fabrics

Parasol cloths are high-performance products. However, given the requirements that have to be met in the field of environmental protection, there is a limit to the degree of perfection that can be achieved in spite of present-day state-of-the-art production and processing. As a result, customers may occasionally lodge complaints regarding certain features that can appear on the cloth. Such features neither alter the value of the product, nor do they impair its usability in any way. As we feel committed to providing full consumer information and thus hope to avoid irritation or dissatisfaction, we should like to draw your attention to the following features:

Crease marks

Crease marks may appear during the production process or when folding the parasol fabric. When held against the light, cloths – particularly those of a light colour – may appear to have a dark streak in the crease.

Chalk effect

Light chalk-like stripes may arise during the processing of materials. Although the greatest of care is taken, they cannot always be totally avoided. They should, however, not be cause for complaint.

Water/rain resistance

Acrylic awnings are impregnated with a water-repelling finish and can withstand short periods of light rainfall if treated with proper care. During lengthy periods of rainfall or heavy downpours, however, the parasol should remain closed in order to prevent any material damage. If the cloth becomes wet, the awning should be opened again as soon as possible to allow it to dry.

Abrasion marks

In the course of time abrasion may weaken the canopy fabric and thus impair its quality. This can be avoided by pulling the cloth between the spokes when closing the parasol and then securing it with a strap to prevent flapping.

Cleaning instructions

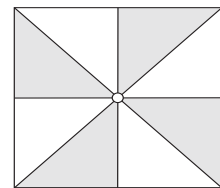
If requested, we will be pleased to forward our information sheet titled "Cleaning the awning fabric".

Characteristic features of our sewing yarn:

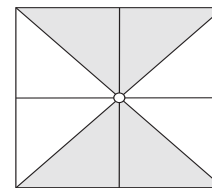
- high tensile strength
- optimum abrasion resistance
- well-balanced elongation property
- high thermal resilience
- good light and weather fastness
- tested acc. to Öko-Test Standard 100

Canopy covering

Canopy covers can be manufactured from the range of cloths described. If requested, we can also supply canopies with alternating segment colours (1/4 division or 1/8 division).



1/8-division



1/4-division

Bordering

The canopy covering is trimmed with high-quality awning acrylic edge binding (red in the photograph). If not specified otherwise, the border will be chosen to match the colour of the canopy fabric.



Example of bordering

Valance DeLuxe

All-round in-vogue design. The recessed valance position prevents rainwater from flowing down over the advertising surface, i.e. no stains. Moreover, the valance can no longer be turned up by wind and rain. DeLuxe is the optimum solution for clearly visible, clean ad-printing. Please note that height measurements of SCHATTELLO and ALBATROS parasols with DeLuxe valances must be reduced by 10 cm.



DeLuxe valance

Summer, Sun – MAY

ShadeScapes Americas
PO Box 190
39300 Back River Road
Paonia, CO 81428
www.shadescapesamericas.com

UNITED STATES & CARIBBEAN:
ShadeScapes USA
Phone 970.527.7070
Fax 970.527.7082
info@shadescapesusa.com
www.shadescapesusa.com

CANADA:
ShadeScapes Canada
Phone 416.763.7118
john@shadescapescanada.com
www.shadescapescanada.com

MEXICO, CENTRAL & SOUTH AMERICA
ShadeScapes Mexico
Phone 011.52.477.104.8223
ventas@shadescapesmex.com
www.shadescapesmex.com

Please feel free to contact us for additional information.