

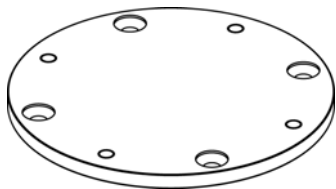
SHADESCAPES AMERICAS

CONCRETE MOUNT KIT INSTALLATION MANUAL

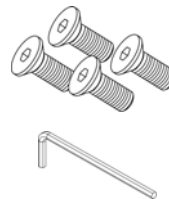
Please thoroughly read this installation manual before installing the Concrete Mount System, and before assembling and operating the Umbrosa Umbrella. The Umbrosa Warranty does not cover damage caused by incorrect installation, wind, or wrongful use of the product. All users must be properly trained in operation and wind guidelines.

Once installed, always use COMMON SENSE WIND GUIDELINES: If it is too windy to be outside enjoying the day, it is best to lower/collapse the Umbrella Frame w/ Fabric Canopy. It is also important to keep it lowered/collapsed when unattended. See manufacturer's limited warranty on page 2.

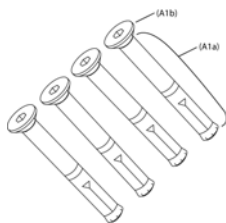
A COMPONENTS LIST & REQUIRED TOOLS



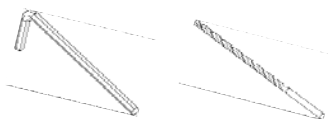
1X - BASE PLATE (BP)
Box A



4X - 10x16mm SPIGOT BOLTS (A2)*
1X - 6mm ALLEN WRENCH (T2)*
Box A



4X - 3/8"x3-3/4" CONCRETE SLEEVE BOLTS (A1)
1X - 7/32" ALLEN WRENCH (T3)
1X - 3/8" CONCRETE DRILL BIT (T4)
Box A



REQUIRED TOOLS LIST (not included):
Standard Electric Drill
Aerosol Compressed Air or Shop Vacuum
Carpenter's Level
Hammer, Pencil

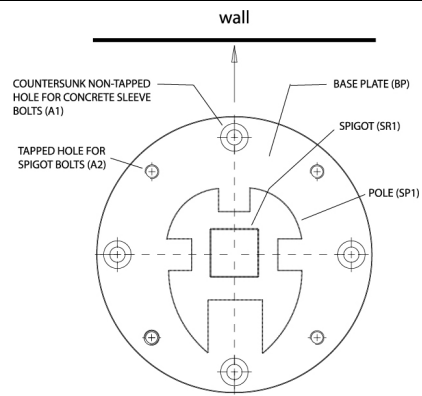
**PLEASE NOTE THE SPIGOT BOLTS AND 6mm ALLEN WRENCH ARE LOCATED IN THE CONCRETE MOUNT BOX, BUT WILL NOT BE USED UNTIL YOU BEGIN TO INSTALL THE UMBRELLA SEE YOUR OWNERS MANUAL FOR DETAILS.*

B MOUNTING INSTRUCTIONS

1:

The Base Plate (BP) has four (4) countersunk holes and four (4) tapped holes. For Spectra and Paraflex umbrellas, line up the tapped holes SQUARE to whatever you are aligning your Umbrella with, for example your house, edge of patio, etc., as shown in the diagram to the right.

Note: The Spigot (SR1), and Pole (SP2) referenced in the diagram to the right may be packed separately from the Concrete Mount Kit. This diagram is for reference only and these parts are not needed until the Concrete Mount Kit has been installed.



2:

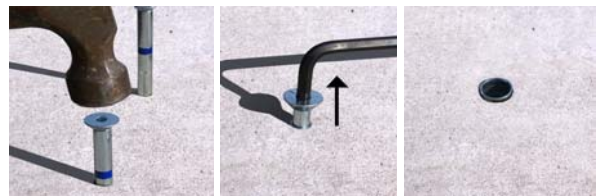
The Concrete Sleeve Bolts (A1) in combination with the Base Plate (BP) require a minimum concrete depth of 4" for optimal anchorage. Determine a level location to install and check surface using a Carpenter's Level.

(a) Using the Base Plate (BP) as a template, mark the four (4) hole locations on the patio surface. (b) Placing the point of the Concrete Drill Bit (T4) into the center of the mark, drill four (4) vertical holes to a depth of 3-3/4". Clear out debris from the hole using either Aerosol Compressed Air or a Shop Vacuum.

Consult your local contractor if you have any questions regarding your particular installation.

3:

(a) Gently hammer the Concrete Sleeve Bolts (A1) into the concrete leaving them flush with the surface.
 (b) Once flush, use the 7/32" Allen Wrench (T3) to remove the four (4) Flat Head Screws (A1b) from the four (4) Sleeves (A1a).
 (c) The Sleeve is shown flush with the surface.



4:

(a) Align the countersunk holes in the Base Plate (BP) with the four (4) Sleeves (A1a).
 (b) Use the 7/32" Allen Wrench (T3) to insert the four (4) Flat Head Screws (A1b) into the four (4) Sleeves. Tighten to completely secure the Base Plate to the surface.
 (c) The Spectra Concrete Mount Kit is now installed.

You are now ready to mount your the spigot for your Umbrosa Umbrella to the Concrete Mount Kit. Locate the Owners Manual for the product you purchased, and use those instructions to complete your installation.

Umbrosa NV warrants to the consumer that the Spectra product is free from manufacturer defects in material or workmanship for a period of three (3) years from the date of original purchase when used in compliance with directions as outlined in the manufacturer's instructions, which includes reasonable and necessary maintenance by the consumer. Warranty does not include normal wear and tear of product. Umbrosa takes no responsibility for incorrect use or assembly related to installation area, consistency of supports and relative hardware used, and capacity of mounting surfaces. Failure to follow the given assembly, maintenance, use and care instructions will void the product warranty. In case of manufacturing defects in material or workmanship, Umbrosa NV, agrees to, at their discretion, send the replacement part for all defective parts.

Distributed by Shadescapes Americas www.shadescapesamericas.com; 818.217.4446. For assembly assistance or questions please contact ShadeScapes Americas at 970.527.7070, or email support@shadescapesusa.com.