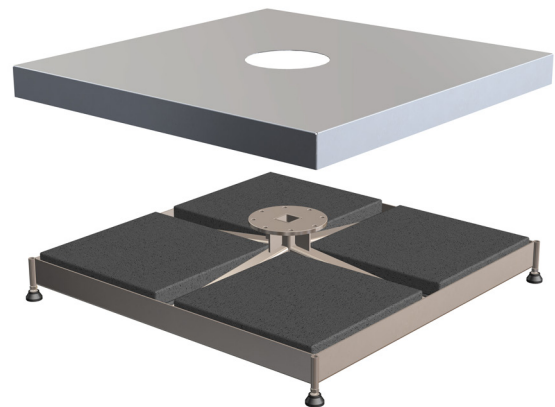


- Base isn't fixed to the ground and can be removed
- Requires 12 concrete pavers for ballast (not included)
- L 400mm x W 400mm x D 40mm paver size (metric)
- L 16" x W 16" x D 1 3/5" paver size (imperial)
- 152mm | 6" height
- 3.5mm | 1/8" wall thickness
- **Hot-dipped galvanised steel**
- 20kg | 44 lb 1.5 oz weight
- Allows 360° umbrella rotation
- Ships in one box
- Suits Shadowspec Serenity™ & Unity™ models
- Full instruction and install guide provided
- Adjustable Feet to level the base up to 50mm | 2"
- Optional lockable Castor Wheels available
- Castor Wheels add 45-80mm | 2-3" to the height
- Supplied with powder-coated Aluminium Cover.



All sizings are +/- 2.5mm | 3/32" and subject to change without notice.

